

Lansdowne Rd between Richmond Rd and Foul Bay Rd

October 28, 2019 To November 01, 2019



The data presented here is for information purposes only and should not be considered authoritative for construction, geotechnical, engineering, navigational, legal, or other site-specific uses. The information shared is owned by the Transportation Division of the Engineering Department at the District of Saanich. Accuracy is not guaranteed.

Start Date: 28-Oct-19
 Start Time: 0:00
 Station ID: M0023-02

Location 1: Lansdowne Rd between Richmond Rd and Foul Bay Rd

Note:

DATE:	October 28, 2019		October 29, 2019		October 30, 2019		October 31, 2019		November 1, 2019		WK AVG		WK AVG	HOURLY
	MON		TUE		WED		THURS		FRI		EB	WB	CH 1+2	%
Time:	EB	WB	EB	WB	EB	WB	EB	WB	EB	WB	EB	WB		
12-1 AM			23	38	36	37	33	43			31	39	70	0.4%
1-2 AM			19	15	14	10	12	9			15	11	26	0.1%
2-3 AM			7	7	10	8	9	6			9	7	16	0.1%
3-4 AM			7	12	8	5	6	10			7	9	16	0.1%
4-5 AM			15	20	15	16	19	29			16	22	38	0.2%
5-6 AM			56	59	54	52	62	48			57	53	110	0.6%
6-7 AM			187	156	196	157	171	151			185	155	339	1.8%
7-8 AM			455	456	485	436	513	471			484	454	939	4.9%
8-9 AM			813	668	785	623	771	574			790	622	1411	7.4%
9-10 AM			722	604	665	526	684	572			690	567	1258	6.6%
10-11 AM			694	641	637	565	607	539			646	582	1228	6.5%
11-12 PM			659	706	676	583	617	663			651	651	1301	6.8%
12-1 PM			720	678	676	593	661	617			686	629	1315	6.9%
1-2 PM			647	697	658	628	655	662			653	662	1316	6.9%
2-3 PM			706	791	688	649	591	696			662	712	1374	7.2%
3-4 PM			698	788	743	753	741	813			727	785	1512	7.9%
4-5 PM			704	818	680	720	749	779			711	772	1483	7.8%
5-6 PM			800	674	774	729	715	708			763	704	1467	7.7%
6-7 PM			647	596	648	582	495	476			597	551	1148	6.0%
7-8 PM			476	420	489	440	338	486			434	449	883	4.6%
8-9 PM			345	391	375	368	321	411			347	390	737	3.9%
9-10 PM			259	334	296	288	288	294			281	305	586	3.1%
10-11 PM			140	142	153	113	160	166			151	140	291	1.5%
11-12 AM			58	65	70	82	87	107			72	85	156	0.8%
LANES			9857	9776	9831	8963	9305	9330			9664	9356	19021	100.0%
TOTAL			19633		18794		18635				19030			
	MON		TUE		WED		THURS		FRI		WK AVG			

PEAK HOUR					TOTAL VEHICALS-PEAK PERIODS		2 HOUR PEAK INTERVALS				
MAX. 7 - 9 am PEAK HOUR	1411	⇒	7.4%	between 8-9 AM	7916	⇒	6 HR TOTAL	2 HR AM (7 - 9 AM)			
MAX. 7 - 11 am PEAK HOUR	1411	⇒	7.4%	between 8-9 AM	5300	⇒	4 HR TOTAL	VEH / HR	VEH / 2HR	2 HR %	
								7-8 AM	939	2350	12.4%
								8-9 AM	1411		
MAX. 11 am - 1 pm PEAK HOUR	1315	⇒	6.9%	between 12-1 PM	24 HOUR FACTORS		2 HR NOON (11 - 1 PM)				
MAX. 11 am - 3 pm PEAK HOUR	1374	⇒	7.2%	between 2-3 PM			VEH / HR	VEH / 2HR	2 HR %		
							11-12 PM	1301	2616	13.8%	
MAX. 4 - 6 pm PEAK HOUR	1483	⇒	7.8%	between 4-5 PM	2.40	⇒	6-24 HR FACT.	12-1 PM	1315		
MAX. 3 - 6 pm PEAK HOUR	1512	⇒	7.9%	between 3-4 PM	3.59	⇒	4-24 HR FACT.	2 HR PM (4 - 6 PM)			
								VEH / HR	VEH / 2HR	2 HR %	
								4-5 PM	1483	2950	15.5%
								5-6 PM	1467		

Lansdowne Rd between Richmond Rd and Foul Bay Rd

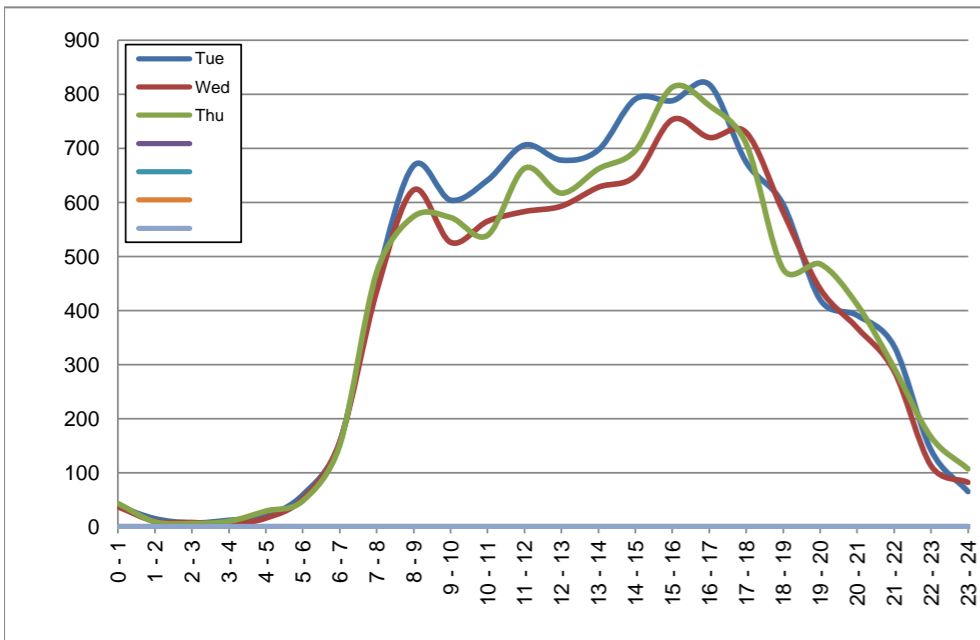
Westbound
October 29, 2019 to October 31, 2019

Hourly Volumes

Time Period	Tue	Wed	Thu			
	Oct 29	Oct 30	Oct 31			
0 - 1	38	37	43			
1 - 2	15	10	9			
2 - 3	7	8	6			
3 - 4	12	5	10			
4 - 5	20	16	29			
5 - 6	59	52	48			
6 - 7	156	157	151			
7 - 8	456	436	471			
8 - 9	668	623	574			
9 - 10	604	526	572			
10 - 11	641	565	539			
11 - 12	706	583	663			
12 - 13	678	593	617			
13 - 14	697	628	662			
14 - 15	791	649	696			
15 - 16	788	753	813			
16 - 17	818	720	779			
17 - 18	674	729	708			
18 - 19	596	582	476			
19 - 20	420	440	486			
20 - 21	391	368	411			
21 - 22	334	288	294			
22 - 23	142	113	166			
23 - 24	65	82	107			
Day Total	9776	8963	9330			

15-Minute Volumes

Time Start	Tue	Wed	Thu				Time Start	Tue	Wed	Thu			
	Oct 29	Oct 30	Oct 31					Oct 29	Oct 30	Oct 31			
0:00	11	15	24				12:00	166	136	142			
0:15	14	6	8				12:15	160	129	154			
0:30	7	10	6				12:30	178	156	168			
0:45	6	6	5				12:45	174	172	153			
1:00	7	6	7				13:00	169	137	170			
1:15	4	1	1				13:15	156	175	150			
1:30	2	2	1				13:30	186	165	175			
1:45	2	1	0				13:45	186	151	167			
2:00	3	1	0				14:00	194	145	151			
2:15	4	0	3				14:15	195	188	186			
2:30	0	4	2				14:30	219	162	191			
2:45	0	3	1				14:45	183	154	168			
3:00	3	2	1				15:00	199	208	183			
3:15	2	1	2				15:15	199	210	229			
3:30	1	0	2				15:30	218	193	224			
3:45	6	2	5				15:45	172	142	177			
4:00	3	6	8				16:00	195	139	215			
4:15	5	4	8				16:15	201	200	177			
4:30	6	5	8				16:30	199	193	201			
4:45	6	1	5				16:45	223	188	186			
5:00	10	8	6				17:00	147	199	199			
5:15	7	9	7				17:15	177	173	188			
5:30	12	14	15				17:30	186	195	184			
5:45	30	21	20				17:45	164	162	137			
6:00	23	33	27				18:00	183	161	125			
6:15	28	27	32				18:15	149	133	127			
6:30	44	40	32				18:30	137	148	120			
6:45	61	57	60				18:45	127	140	104			
7:00	80	73	74				19:00	116	137	132			
7:15	87	82	92				19:15	114	95	112			
7:30	121	107	126				19:30	106	112	119			
7:45	168	174	179				19:45	84	96	123			
8:00	164	168	139				20:00	120	103	111			
8:15	172	166	126				20:15	76	72	108			
8:30	155	148	162				20:30	76	101	86			
8:45	177	141	147				20:45	119	92	106			
9:00	137	144	152				21:00	92	81	88			
9:15	142	117	135				21:15	107	82	79			
9:30	169	139	144				21:30	83	69	64			
9:45	156	126	141				21:45	52	56	63			
10:00	148	144	144				22:00	53	39	53			
10:15	167	126	139				22:15	26	34	44			
10:30	156	151	118				22:30	39	20	38			
10:45	170	144	138				22:45	24	20	31			
11:00	158	135	147				23:00	28	41	41			
11:15	201	129	174				23:15	15	13	28			
11:30	186	163	197				23:30	9	14	22			
11:45	161	156	145				23:45	13	14	16			



Site notes:

Lansdowne Rd between Richmond Rd and Foul Bay Rd

Eastbound

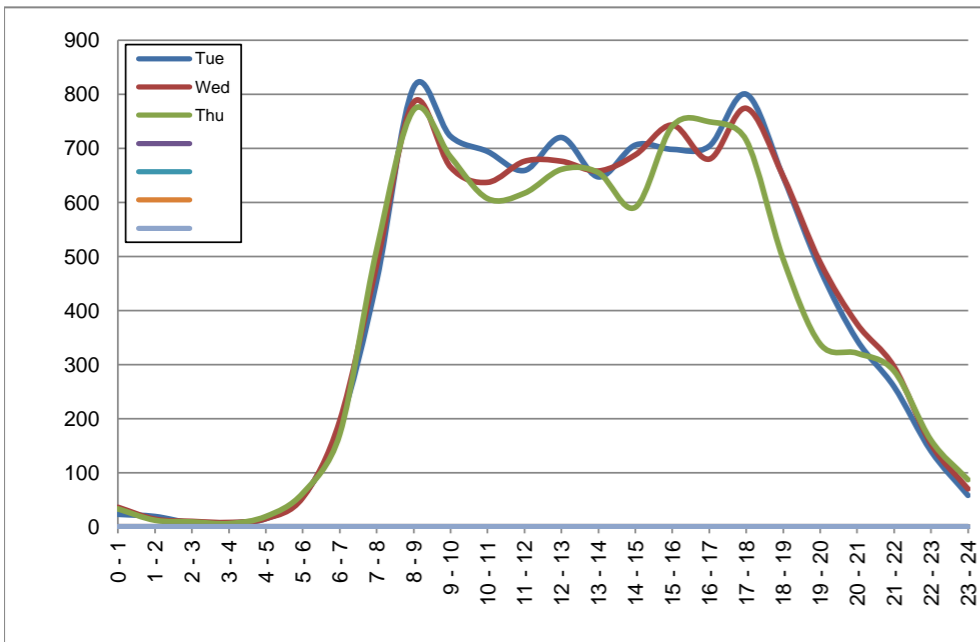
October 29, 2019 to October 31, 2019

Hourly Volumes

Time Period	Tue	Wed	Thu			
	Oct 29	Oct 30	Oct 31			
0 - 1	23	36	33			
1 - 2	19	14	12			
2 - 3	7	10	9			
3 - 4	7	8	6			
4 - 5	15	15	19			
5 - 6	56	54	62			
6 - 7	187	196	171			
7 - 8	455	485	513			
8 - 9	813	785	771			
9 - 10	722	665	684			
10 - 11	694	637	607			
11 - 12	659	676	617			
12 - 13	720	676	661			
13 - 14	647	658	655			
14 - 15	706	688	591			
15 - 16	698	743	741			
16 - 17	704	680	749			
17 - 18	800	774	715			
18 - 19	647	648	495			
19 - 20	476	489	338			
20 - 21	345	375	321			
21 - 22	259	296	288			
22 - 23	140	153	160			
23 - 24	58	70	87			
Day Total	9857	9831	9305			

15-Minute Volumes

Time Start	Tue	Wed	Thu				Time Start	Tue	Wed	Thu			
	Oct 29	Oct 30	Oct 31					Oct 29	Oct 30	Oct 31			
0:00	6	13	10				12:00	188	172	162			
0:15	6	14	7				12:15	178	167	160			
0:30	6	5	8				12:30	180	175	171			
0:45	5	4	8				12:45	174	162	168			
1:00	5	1	6				13:00	144	168	158			
1:15	8	6	2				13:15	176	173	157			
1:30	2	4	3				13:30	165	146	169			
1:45	4	3	1				13:45	162	171	171			
2:00	3	5	3				14:00	167	165	156			
2:15	2	1	5				14:15	181	188	164			
2:30	1	1	0				14:30	180	159	133			
2:45	1	3	1				14:45	178	176	138			
3:00	1	2	1				15:00	158	177	173			
3:15	1	4	3				15:15	175	170	185			
3:30	1	1	0				15:30	184	179	196			
3:45	4	1	2				15:45	181	217	187			
4:00	3	5	3				16:00	185	189	173			
4:15	2	5	4				16:15	179	155	185			
4:30	5	4	4				16:30	173	158	182			
4:45	5	1	8				16:45	167	178	209			
5:00	1	5	9				17:00	197	215	183			
5:15	11	14	11				17:15	216	193	179			
5:30	21	13	23				17:30	204	188	188			
5:45	23	22	19				17:45	183	178	165			
6:00	26	17	24				18:00	166	174	149			
6:15	31	28	31				18:15	150	163	133			
6:30	51	61	41				18:30	167	152	105			
6:45	79	90	75				18:45	164	159	108			
7:00	68	80	78				19:00	149	127	101			
7:15	88	82	111				19:15	102	151	89			
7:30	129	132	118				19:30	121	98	74			
7:45	170	191	206				19:45	104	113	74			
8:00	205	212	206				20:00	85	102	63			
8:15	225	209	231				20:15	105	100	82			
8:30	199	192	154				20:30	79	91	92			
8:45	184	172	180				20:45	76	82	84			
9:00	184	186	188				21:00	80	96	83			
9:15	203	193	172				21:15	57	71	78			
9:30	165	129	155				21:30	53	73	75			
9:45	170	157	169				21:45	69	56	52			
10:00	192	167	143				22:00	38	43	58			
10:15	182	142	159				22:15	50	41	39			
10:30	164	157	134				22:30	27	40	24			
10:45	156	171	171				22:45	25	29	39			
11:00	139	171	171				23:00	23	27	27			
11:15	177	162	157				23:15	15	20	14			
11:30	156	185	133				23:30	13	13	26			
11:45	187	158	156				23:45	7	10	20			



Site notes:

Vehicle Speed Summary

Saanich Engineering Department

Count Id: [M0023-02](#)

Filename: [Lansdowne Rd between Richmond Rd and Foul Bay Rd-Oct-2019.xlsm](#)

Location: Lansdowne Rd between Richmond Rd and Foul Bay Rd

Note:

Direction: **East-West**

Dates: **October 28, 2019 To November 01, 2019**

Filtered data

AVG. SPEED	24 mph	39 km/h
50 % SPEED	25 mph	41 km/h
85 % SPEED	30 mph	49 km/h
95 % SPEED	33 mph	53 km/h

Location Map



Lansdowne Rd between Richmond Rd and Foul Bay Rd

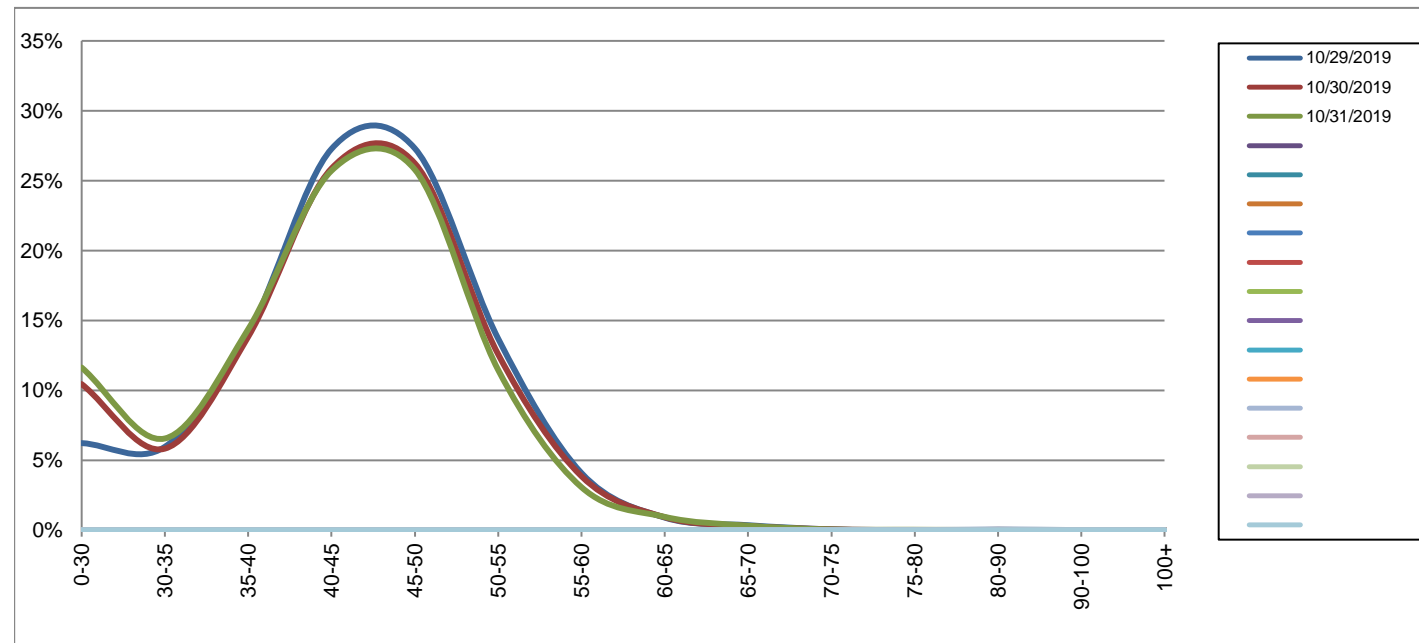
Westbound

October 29, 2019 to October 31, 2019

Daily Speed Bin Percentages															Daily Speed Bin Volumes														Total	Avg.
Bin #	1	2	3	4	5	6	7	8	9	10	11	12	13	14	1	2	3	4	5	6	7	8	9	10	11	12	13	14	Volume	Speed
Bin Speeds	0-30	30-35	35-40	40-45	45-50	50-55	55-60	60-65	65-70	70-75	75-80	80-90	90-100	100+	0-30	30-35	35-40	40-45	45-50	50-55	55-60	60-65	65-70	70-75	75-80	80-90	90-100	100+		
10/29/2019	6.2%	6.0%	14.0%	27.3%	27.3%	13.7%	4.1%	0.9%	0.4%	0.1%	0.0%	0.0%	0.0%	0.0%	609	583	1373	2666	2670	1340	400	88	35	6	1	4	1	0	9776	43
10/30/2019	10.5%	5.8%	13.8%	25.9%	26.2%	12.6%	3.9%	0.9%	0.3%	0.1%	0.0%	0.0%	0.0%	0.0%	937	523	1240	2319	2352	1128	346	83	27	6	0	2	0	0	8963	42
10/31/2019	11.6%	6.6%	14.4%	25.7%	25.8%	11.5%	3.1%	1.0%	0.3%	0.1%	0.0%	0.0%	0.0%	0.0%	1086	612	1341	2399	2407	1070	287	89	30	5	3	1	0	0	9330	41
Total	9.4%	6.1%	14.1%	26.3%	26.5%	12.6%	3.7%	0.9%	0.3%	0.1%	0.0%	0.0%	0.0%	0.0%	2632	1718	3954	7384	7429	3538	1033	260	92	17	4	7	1	0	28069	42

Speed Data Summary

Bin #	1	2	3	4	5	6	7	8	9	10	11	12	13	14	Total
Bin Speeds	0-30	30-35	35-40	40-45	45-50	50-55	55-60	60-65	65-70	70-75	75-80	80-90	90-100	100+	
Survey Total	2632	1718	3954	7384	7429	3538	1033	260	92	17	4	7	1	0	28069
% Total	9.4%	6.1%	14.1%	26.3%	26.5%	12.6%	3.7%	0.9%	0.3%	0.1%	0.0%	0.0%	0.0%	0.0%	100%
Accumulated %	9.4%	15.5%	29.6%	55.9%	82.4%	95.0%	98.6%	99.6%	99.9%	100.0%	100.0%	100.0%	100.0%	100%	
Inverse Accum. %	90.6%	84.5%	70.4%	44.1%	17.6%	5.0%	1.4%	0.4%	0.1%	0.0%	0.0%	0.0%	0.0%	0.0%	
Average Speed	42 KM/H														



Site notes:

Lansdowne Rd between Richmond Rd and Foul Bay Rd

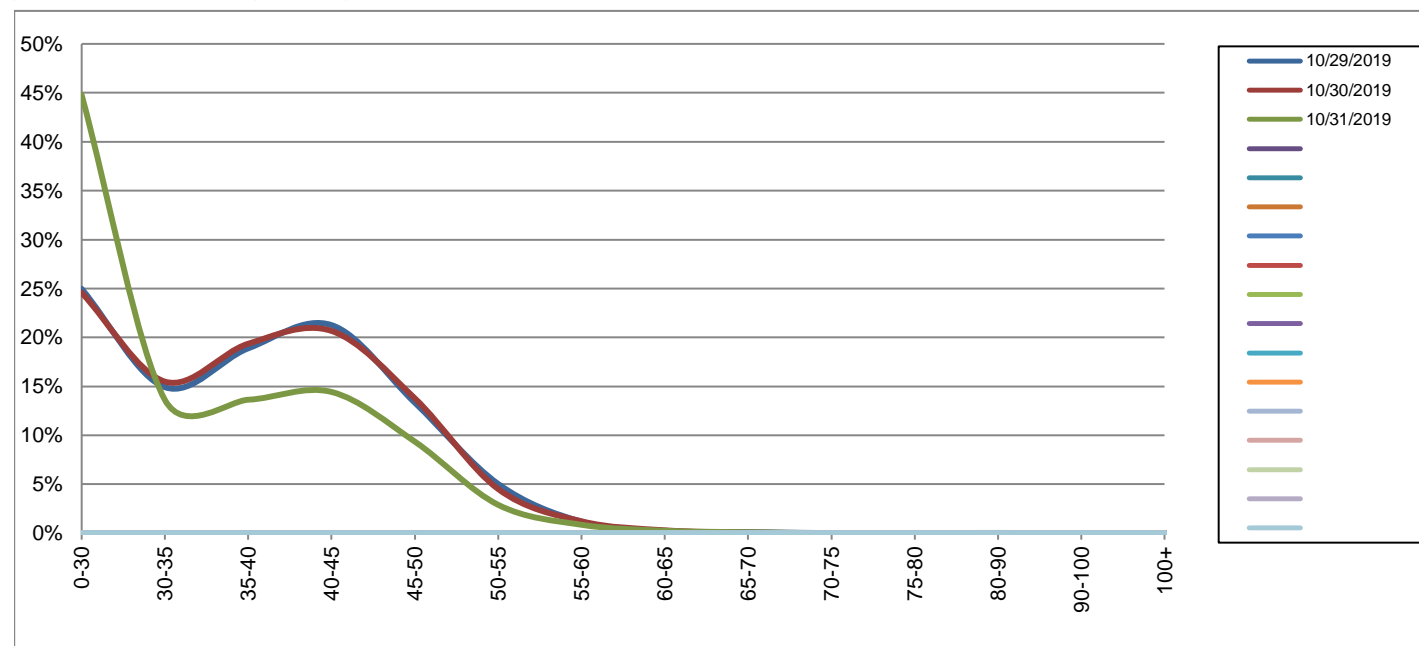
Eastbound

October 29, 2019 to October 31, 2019

Daily Speed Bin Percentages															Daily Speed Bin Volumes														Total	Avg.
Bin #	1	2	3	4	5	6	7	8	9	10	11	12	13	14	1	2	3	4	5	6	7	8	9	10	11	12	13	14	Volume	Speed
Bin Speeds	0-30	30-35	35-40	40-45	45-50	50-55	55-60	60-65	65-70	70-75	75-80	80-90	90-100	100+	0-30	30-35	35-40	40-45	45-50	50-55	55-60	60-65	65-70	70-75	75-80	80-90	90-100	100+		
10/29/2019	25.0%	14.9%	18.9%	21.3%	13.3%	5.0%	1.2%	0.2%	0.1%	0.0%	0.0%	0.0%	0.0%	0.0%	2462	1471	1862	2096	1315	496	116	23	11	1	1	3	0	0	9857	35
10/30/2019	24.6%	15.5%	19.4%	20.7%	13.8%	4.5%	1.2%	0.3%	0.1%	0.0%	0.0%	0.0%	0.0%	0.0%	2417	1523	1903	2032	1355	444	120	29	6	1	0	0	1	0	9831	35
10/31/2019	44.8%	13.6%	13.6%	14.4%	9.4%	2.9%	0.9%	0.2%	0.1%	0.0%	0.0%	0.0%	0.0%	0.0%	4170	1268	1269	1343	871	270	80	23	9	0	1	0	1	0	9305	29
Total	31.2%	14.7%	17.4%	18.9%	12.2%	4.2%	1.1%	0.3%	0.1%	0.0%	0.0%	0.0%	0.0%	0.0%	9049	4262	5034	5471	3541	1210	316	75	26	2	2	3	2	0	28993	33

Speed Data Summary

Bin #	1	2	3	4	5	6	7	8	9	10	11	12	13	14	Total
Bin Speeds	0-30	30-35	35-40	40-45	45-50	50-55	55-60	60-65	65-70	70-75	75-80	80-90	90-100	100+	
Survey Total	9049	4262	5034	5471	3541	1210	316	75	26	2	2	3	2	0	28993
% Total	31.2%	14.7%	17.4%	18.9%	12.2%	4.2%	1.1%	0.3%	0.1%	0.0%	0.0%	0.0%	0.0%	0.0%	100%
Accumulated %	31.2%	45.9%	63.3%	82.1%	94.4%	98.5%	99.6%	99.9%	100.0%	100.0%	100.0%	100.0%	100.0%	100%	
Inverse Accum. %	68.8%	54.1%	36.7%	17.9%	5.6%	1.5%	0.4%	0.1%	0.0%	0.0%	0.0%	0.0%	0.0%	0.0%	
Average Speed	33 KM/H														



Site notes:

Lansdowne Rd between Richmond Rd and Foul Bay Rd

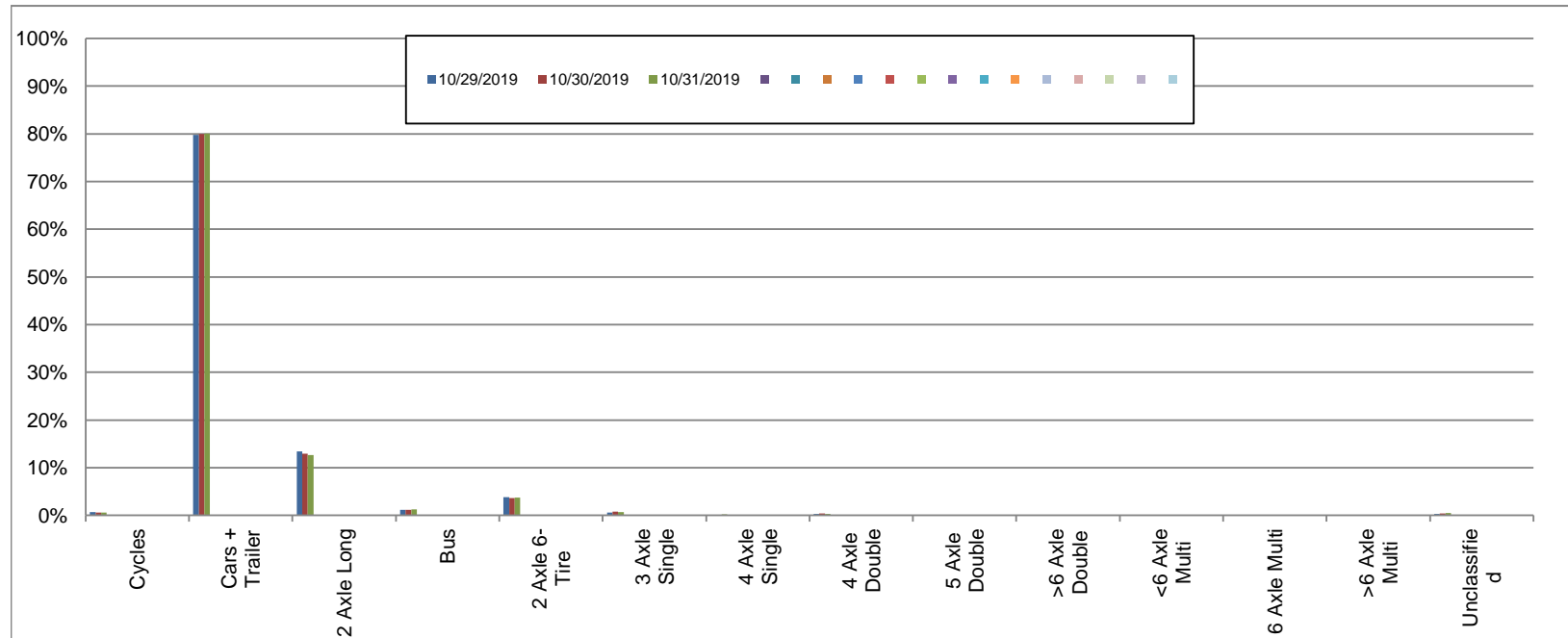
Westbound

October 29, 2019 to October 31, 2019

Daily Class Bin Percentages															Daily Class Bin Volumes														
Bin #	1	2	3	4	5	6	7	8	9	10	11	12	13	14	1	2	3	4	5	6	7	8	9	10	11	12	13	14	Total Volume
Bin Class	Cycles	Cars + Trailer	2 Axle Long	Bus	2 Axle 6-Tire	3 Axle Single	4 Axle Single	4 Axle Double	5 Axle Double	>6 Axle Double	<6 Axle Multi	6 Axle Multi	>6 Axle Multi	Unclassified	Cycles	Cars + Trailer	2 Axle Long	Bus	2 Axle 6-Tire	3 Axle Single	4 Axle Single	4 Axle Double	5 Axle Double	>6 Axle Double	<6 Axle Multi	6 Axle Multi	>6 Axle Multi	Unclassified	
10/29/2019	0.7%	79.7%	13.4%	1.1%	3.8%	0.6%	0.1%	0.3%	0.0%	0.0%	0.0%	0.0%	0.0%	0.3%	66	7796	1307	112	372	54	5	29	2	1	0	0	0	32	9776
10/30/2019	0.6%	79.9%	13.0%	1.2%	3.6%	0.8%	0.1%	0.4%	0.1%	0.0%	0.0%	0.0%	0.0%	0.4%	53	7164	1162	107	321	69	10	33	7	2	0	0	0	35	8963
10/31/2019	0.6%	80.1%	12.7%	1.2%	3.7%	0.7%	0.2%	0.3%	0.1%	0.0%	0.0%	0.0%	0.0%	0.5%	58	7471	1184	113	345	61	18	28	7	1	2	0	0	42	9330
Total	0.6%	79.9%	13.0%	1.2%	3.7%	0.7%	0.1%	0.3%	0.1%	0.0%	0.0%	0.0%	0.0%	0.4%	177	22431	3653	332	1038	184	33	90	16	4	2	0	0	109	28069

Class Data Summary

Bin #	1	2	3	4	5	6	7	8	9	10	11	12	13	14	Total Volume
Bin Class	Cycles	Cars + Trailer	2 Axle Long	Bus	2 Axle 6-Tire	3 Axle Single	4 Axle Single	4 Axle Double	5 Axle Double	>6 Axle Double	<6 Axle Multi	6 Axle Multi	>6 Axle Multi	Unclassified	Total Volume
Survey Total	177	22431	3653	332	1038	184	33	90	16	4	2	0	0	109	28069
% Total	0.6%	79.9%	13.0%	1.2%	3.7%	0.7%	0.1%	0.3%	0.1%	0.0%	0.0%	0.0%	0.0%	0.4%	100%
Accumulated %	0.6%	80.5%	93.6%	94.7%	98.4%	99.1%	99.2%	99.5%	99.6%	99.6%	99.6%	99.6%	99.6%	100.0%	
Inv. Accum. %	99.4%	19.5%	6.4%	5.3%	1.6%	0.9%	0.8%	0.5%	0.4%	0.4%	0.4%	0.4%	0.4%	0.0%	



Classification Descriptions

Bin #	Bin Description
1	Motorcycles
2	Passenger cars, including those with recreational trailers
3	2-axle pick-ups, vans, and RVs, including those with recreational trailers
4	Buses
5	2-axle, 6-tire single units
6	3-axle single units
7	4-axle single units
8	3-axle or 4-axle double unit
9	5-axle double unit
10	6-, 7-, or 8-axle double unit
11	5-axle multiple unit
12	6-axle multiple unit
13	7-or-more-axle multiple unit
14	Vehicles that could not be classified

Site notes:

Lansdowne Rd between Richmond Rd and Foul Bay Rd

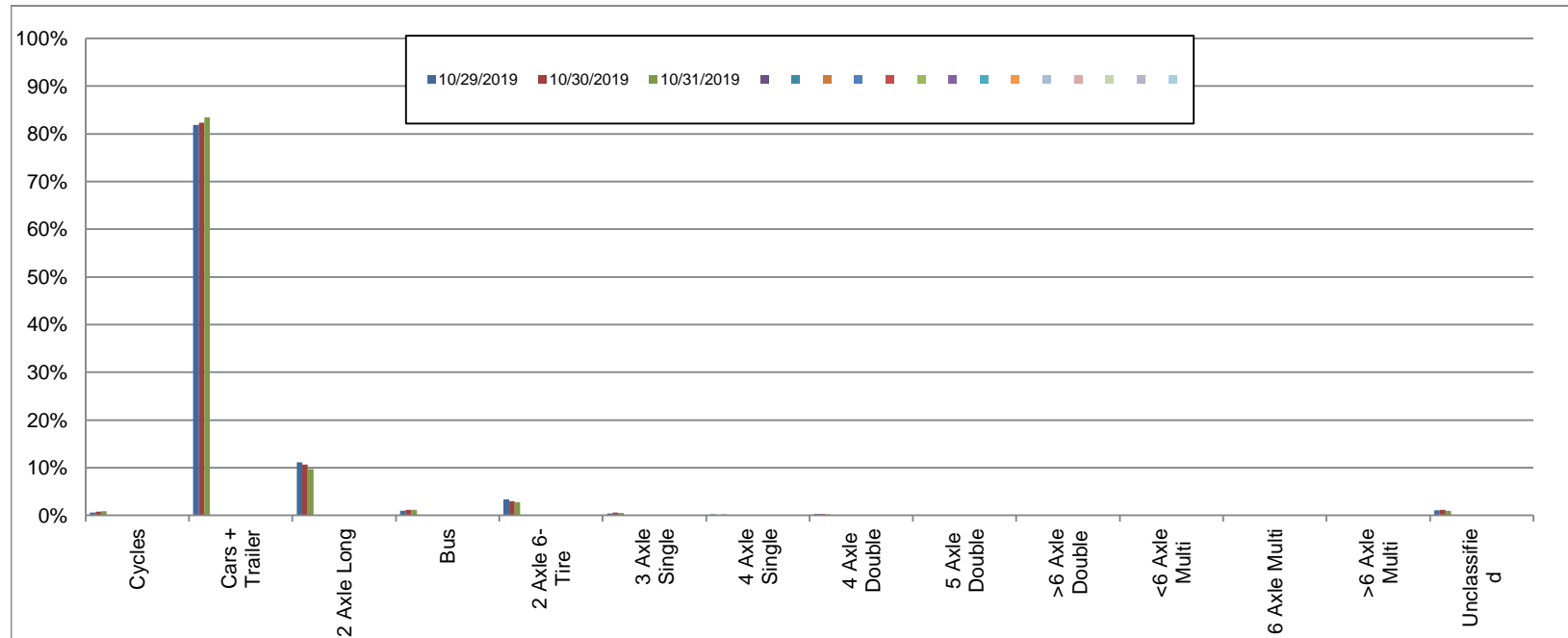
Eastbound

October 29, 2019 to October 31, 2019

Daily Class Bin Percentages															Daily Class Bin Volumes														
Bin #	1	2	3	4	5	6	7	8	9	10	11	12	13	14	1	2	3	4	5	6	7	8	9	10	11	12	13	14	Total Volume
Bin Class	Cycles	Cars + Trailer	2 Axle Long	Bus	2 Axle 6-Tire	3 Axle Single	4 Axle Single	4 Axle Double	5 Axle Double	>6 Axle Double	<6 Axle Multi	6 Axle Multi	>6 Axle Multi	Unclassified	Cycles	Cars + Trailer	2 Axle Long	Bus	2 Axle 6-Tire	3 Axle Single	4 Axle Single	4 Axle Double	5 Axle Double	>6 Axle Double	<6 Axle Multi	6 Axle Multi	>6 Axle Multi	Unclassified	
10/29/2019	0.6%	81.9%	11.2%	0.9%	3.3%	0.4%	0.2%	0.3%	0.0%	0.0%	0.0%	0.0%	0.0%	1.1%	60	8073	1101	93	326	42	17	33	2	1	0	0	0	109	9857
10/30/2019	0.8%	82.3%	10.6%	1.1%	3.0%	0.6%	0.1%	0.3%	0.0%	0.0%	0.0%	0.0%	0.0%	1.1%	75	8095	1045	109	292	57	11	32	4	0	0	0	0	111	9831
10/31/2019	0.9%	83.5%	9.7%	1.1%	2.8%	0.5%	0.2%	0.2%	0.0%	0.0%	0.0%	0.0%	0.0%	0.9%	82	7772	905	105	262	50	16	18	4	3	0	0	0	88	9305
Total	0.7%	82.6%	10.5%	1.1%	3.0%	0.5%	0.2%	0.3%	0.0%	0.0%	0.0%	0.0%	0.0%	1.1%	217	23940	3051	307	880	149	44	83	10	4	0	0	0	308	28993

Class Data Summary

Bin #	1	2	3	4	5	6	7	8	9	10	11	12	13	14	Total Volume
Bin Class	Cycles	Cars + Trailer	2 Axle Long	Bus	2 Axle 6-Tire	3 Axle Single	4 Axle Single	4 Axle Double	5 Axle Double	>6 Axle Double	<6 Axle Multi	6 Axle Multi	>6 Axle Multi	Unclassified	Total Volume
Survey Total	217	23940	3051	307	880	149	44	83	10	4	0	0	0	308	28993
% Total	0.7%	82.6%	10.5%	1.1%	3.0%	0.5%	0.2%	0.3%	0.0%	0.0%	0.0%	0.0%	0.0%	1.1%	100%
Accumulated %	0.7%	83.3%	93.8%	94.9%	97.9%	98.5%	98.6%	98.9%	98.9%	98.9%	98.9%	98.9%	98.9%	100.0%	
Inv. Accum. %	99.3%	16.7%	6.2%	5.1%	2.1%	1.5%	1.4%	1.1%	1.1%	1.1%	1.1%	1.1%	1.1%	0.0%	



Classification Descriptions

Bin #	Bin Description
1	Motorcycles
2	Passenger cars, including those with recreational trailers
3	2-axle pick-ups, vans, and RVs, including those with recreational trailers
4	Buses
5	2-axle, 6-tire single units
6	3-axle single units
7	4-axle single units
8	3-axle or 4-axle double unit
9	5-axle double unit
10	6-, 7-, or 8-axle double unit
11	5-axle multiple unit
12	6-axle multiple unit
13	7-or-more-axle multiple unit
14	Vehicles that could not be classified

Site notes: